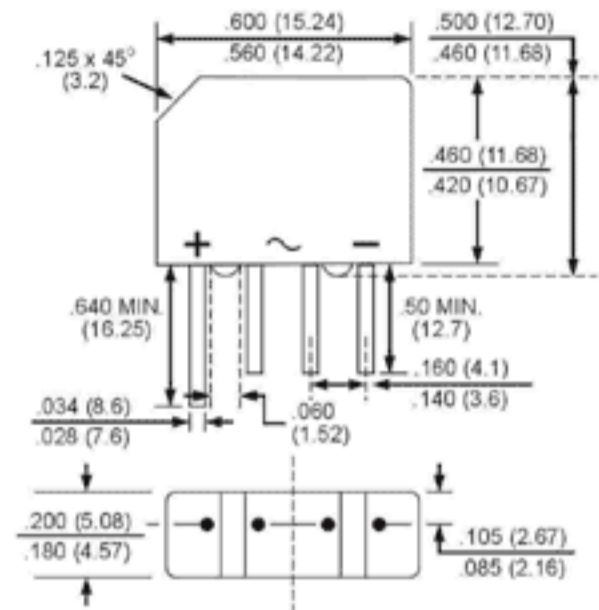


**GLASS PASSIVATED
BRIDGE RECTIFIERS**
REVERSE VOLTAGE - 50 to 1000 Volts
FORWARD CURRENT - 1.5 Amperes
FEATURES

- Surge overload rating - 40 amperes peak
- Ideal for printed circuit board
- Plastic material has Underwriters Laboratory Flammability Classification 94V-0
- Mounting Position: Any



Dimensions in inches and (millimeters)

MAXIMUM RATINGS AND ELECTRICAL CHARACTERISTICS

 Rating at 25°C ambient temperature unless otherwise specified.
 Resistive or inductive load, 60Hz.
 For capacitive load, derate current by 20%

CHARACTERISTICS	KBP005G	KBP01G	KBP02G	KBP04G	KBP06G	KBP08G	KBP10G	UNIT
Maximum Recurrent Peak Reverse Voltage	50	100	200	400	600	800	1000	V
Maximum RMS Bridge Input Voltage	35	70	140	280	420	560	700	V
Maximum DC Blocking Voltage	50	100	200	400	600	800	1000	V
Maximum Average Forward Rectified Output Current @ $T_A=50^\circ\text{C}$	1.5							A
Peak Forward Surge Current, 8.3ms single half sine-wave super imposed on rated load	40							A
Maximum Forward Voltage Drop per Bridge Element at 1.5A Peak	1.1							V
Maximum Reverse Current at Rated DC Blocking Voltage per Element	10.0							μA
Maximum Reverse Current at Rated DC Blocking Voltage per Element $T_A=100^\circ\text{C}$	1.0							mA
Operating Temperature Range T_J	-55 to +150							$^\circ\text{C}$
Storage Temperature Range T_A	-55 to +150							$^\circ\text{C}$